

# **QCAM**

## **QCAM QSD-721 Quick Start Guide**

**Version 1.0.0**

**Revised December 16th, 2015**

**1**

# **QCAM**

## Basic Operations

1. Insert the microSD card (up to 64GB) into the microSD card slot (metal contacts facing up) located on one side of the QSD-721. **NOTE: The card must be formatted to FAT32. Most cards 32GB and below will by default already be formatted to to FAT32. As 64GB cards are typically not formatted to FAT32 you will need to complete a format for cards of this size.**
2. Move the slider located on the QSD-721 to the desired recording mode. There are three types of recording modes as follows:

The left-most mode is the "Surveillance Mode", This mode shows the symbol of an eye on the QSD-721. This mode records continuously until the microSD card is full. It then overwrites the oldest recordings first and continues creating recordings (circular recording is enabled on this mode). To record as much video as possible, this mode records in VGA resolution (640 x 360).

The middle option is called "On-The-Go" mode, which shows a symbol of a running man. This mode records when motion detection is detected and for an additional 2 minutes after the last motion was detected. This mode also uses circular recording (your oldest recordings will be deleted in order to store new recordings). This mode utilizes recording at a 720p resolution (1280 x 720).

3. The right-most mode is the "Custom Mode". Please refer to the Custom Mode Setup for instructions on how to set up custom configurations.

Power on the QSD-721 by holding the power button for about 2 seconds. You will notice the LED indicator becomes active. Depending on what mode the QSD-721 is in, you will see the following variations:

### **Without DC adapter**

Solid Green LED: camera is booted up

Solid Red LED: no card, card failure, low battery, or card is full (not in loop recording mode)

Flashing Green LED: camera is recording normally

Green / Red LED intermittent flashing: battery low and recording

### **DC adapter plugged in**

Solid Orange LED: charging but not recording

Solid Green LED: charging complete but not recording

Flashing Green LED: charging complete and recording

Flashing Green & Orange: charging and recording

Solid Red LED: no card, card failure or card is full (not in loop recording)

### **Connected to computer**

Solid Orange LED: charging

Solid Green LED: charging complete

4. To view your recordings, plug the QSD-721 into your computer using the provided USB cable. The camera will appear as a removable disk and should appear in "My Computer" (on Windows). On Mac, open up "Finder" and the device will appear on the left side as a connected device.

Listed inside the connected drive directory there will be a folder labeled "DVR". This folder holds all recordings made on the QSD-721. From here, you can view, copy, or delete any recordings you wish.

**NOTE: The camera cannot record while connected to a PC.**

**NOTE: Format as FAT32:** Most MicroSD Cards 32GB and under are already in FAT32 format. 64GB cards normally are exFAT format. If your card is not FAT32, please use the process below to format the card:

**Windows users:**

1. Insert the card into the camera, connect the camera to the PC, and determine the drive designation (i.e., G:\, H:\, etc.)
2. Download the fat32format utility found here: [qcam.com/qsdsupport](http://qcam.com/qsdsupport) (or you may find this software on the included CD-ROM).
3. Launch or run the guiformat.exe
4. Choose the drive that corresponds to your SD card.
5. Check the Quick Format box.
6. Press Start.

Once it has finished, your MicroSD card should now work with the camera.

**Mac Users:**

1. Connect the SD card to your computer by using an external card reader.
2. In Launchpad type in Disk Utility.
3. Launch the disk utility
4. Find the SD card in the left side of the window.
5. Click the ERASE tab in the middle of the window.
6. Click on the "erase" at the bottom of the current menu.
7. Finally confirm the erase to complete the formatting.

## Custom Mode Setup

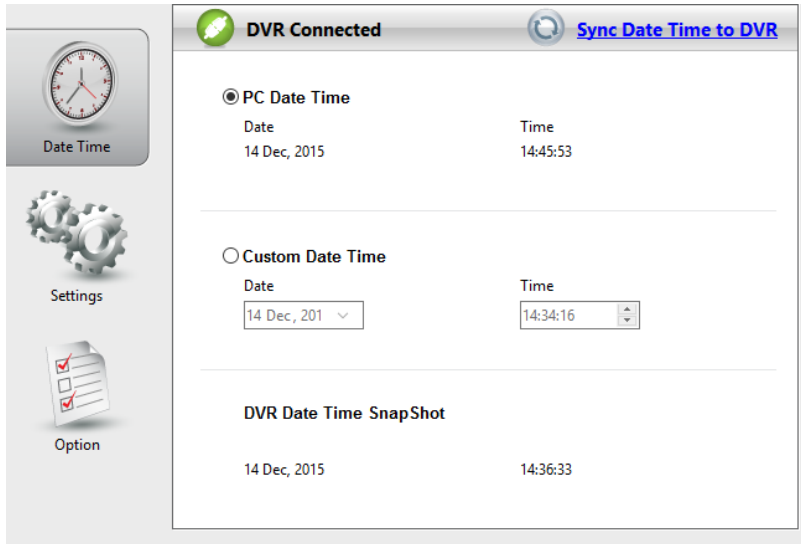
To setup Custom Mode (the third mode on the right side of the QSD-721 slider), the QCAM DVR widget needs to be installed on your PC or Mac.

The DVR Widget can be found at [qcam.com/qsdsupport](http://qcam.com/qsdsupport) for both PC and Mac.

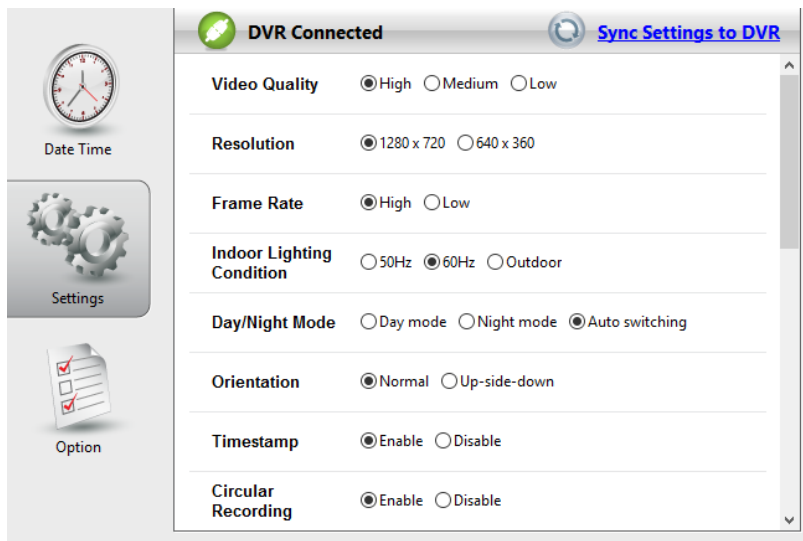
**NOTE: Some antivirus programs have been known to flag the widget as a virus. This program is safe and an exception may need to be created within your antivirus program. This program contains no bloatware or unneeded add-ons.**

1. Ensure the QSD-721 is set to Custom Mode. To do this, move the slider to the far right. The custom Mode is designated by a gear icon above the slider.
2. Plug the QSD-721 into your PC or Mac using the provided USB cable adapter.
3. Open the QCAM DVR Widget that you installed. (DVR Widget can be found at [qcam.com/qsdsupport](http://qcam.com/qsdsupport))

- Once the software widget is open, you should see the following screen below. At this point we recommend syncing the date and time to the QSD-721 as it will make it easier to find your recordings when you check the camera in the future. To sync the date and time, click on the section on the left of the software titled "Date Time". From this point, change the time and date according to your specifications. Once done, click on the blue highlighted text found in the top right that reads "Sync Settings to DVR".



- To edit settings, click on the "Settings" section on the left side of the software. You should see a list of preset features that can be adjusted with a description of each preset. After you have selected the desired preset, click the blue highlighted text which states "Sync Settings to DVR". You can now disconnect the camera and start using it.



If the preset options do not suit your needs, you can customize the QSD-721 settings even further. To do this, click on the “Option” category on the left of the software, and ensure the “Setting Mode” is set to “Custom Mode”. Click the blue highlighted text on the top right labeled “Save Option” to change the mode. Then head back to the “Settings” section, you should see the list of advanced features to adjust.

Once you have adjusted the settings you need, click the blue highlighted text on the top right that reads “Sync Settings to DVR”. You can now disconnect the camera and start using it.

**NOTE: Depending upon the version of the widget the software you have may differ in appearance.**